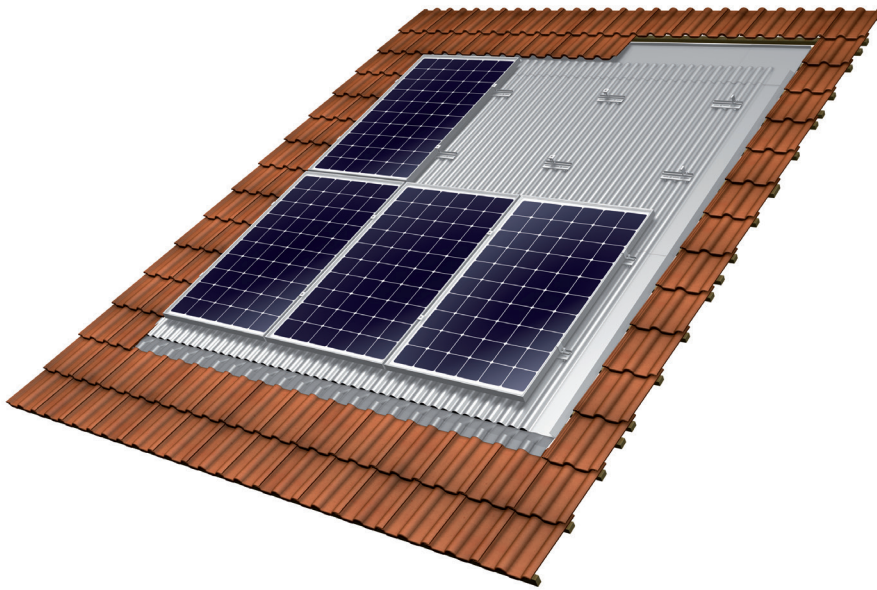




mounting
systems



Theta

Flexible applications

Theta readily allows the integration of framed and unframed photovoltaic modules into new and old roofs regardless of the type of roof covering ¹. The system is mounted on top of the existing roof battens and replaces the regular roof cladding.

High impermeability

Thanks to its substructure, the Theta meets the same requirements for waterproofing as a conventional roof. The special adapters ensure optimum ventilation while transmitting the occurring loads into the roof structure ².

Individual array

The roof can be entirely or partly covered with modules. Essentially, all connected module arrangements and integration of windows are possible ³.

Appealing optics

The Theta blends in harmoniously with the roof skin and creates an aesthetic module mounting system.

Static reliability assured

Using Mounting Systems' configuration software, the material for any standard configuration can be calculated in minutes, project-specific, auditable static verification (based on the applicable national norms) included.

Maximum service life

All components are made of extruded aluminium and stainless steel. This choice of material guarantees both full recyclability and a maximum service life due to high resistance to corrosion.

- 1 The Theta-System is compatible with nearly all conventional types of roofing tile, formwork and slate roofing. For detailed information, please contact us before you commence planning.
- 2 Complies with German roofing regulations. Any installation must also be in accordance with local roofing regulations.
- 3 Subject to previous checking.



In-roof



Unframed module



Framed module



Orientation portrait



Orientation landscape



Double Roman Tiles



Slate



Plain Tiles



Bitumen shingles



Installation in landscape orientation



CSTB

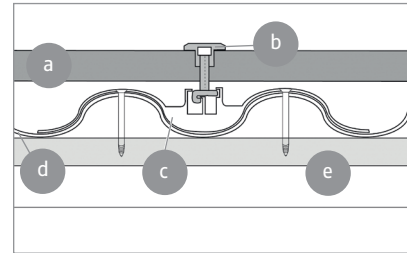
Avis Technique

MPA
Dresden

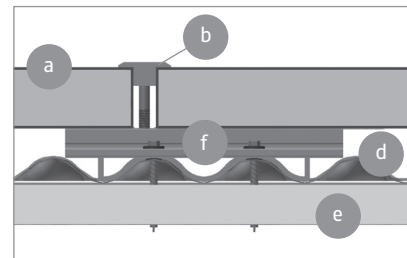
Fire behaviour tests in accordance with DIN EN 13501-5:2010-02



Application	<i>Pitched roof – roof-integration</i>
Roof cladding	<i>Suitable for most types of roof cladding</i>
Roof slope	<i>10° to 45° (other slopes on request)¹</i>
PV modules	<i>Framed, unframed</i>
Total height of PV system	<i>Portrait: 41 mm + module height Landscape: 32 mm + module height</i>
Type of mounting	<i>Flat</i>
Module layout	<i>Connected surfaces, as well as entire roof. Integration of windows possible (subject to previous checking).</i>
Module orientation	<i>Landscape, portrait</i>
Size of module array	<i>Any size possible</i>
Position of the module array	<i>No special requirements</i>
Roof structure	<i>Battens as for conventional tile covering²</i>
Standards	<i>Eurocode 1 – Actions on structures Eurocode 9 – Design of aluminium structures</i>
Certificates and material testing	<i>· GS mark: Guaranteed Safety · CSTB: Avis Technique with Conergy (No: 21/10-13) and with REC (No: 21/12-28) · MPA Dresden: Fire behaviour tests in accordance with DIN EN 13501-5:2010-02</i>
Supporting profiles	<i>Extruded Aluminium (EN AW 6063 T66)</i>
Small parts	<i>Stainless steel (V2A)</i>
Flashing (lateral and top)	<i>Aluminium (EN AW 5005)</i>
Corrugated metal	<i>Aluminium (EN AW 3005)</i>
Seals	<i>EPDM</i>
Colour	<i>Profiles/sheeting: plate finish</i>
Warranty	<i>10 years³</i>



Horizontal section, landscape installation



Horizontal section, portrait installation

- a** PV module
- b** Module clamp
- c** Adapter for landscape installation
- d** Corrugated sheet
- e** Roof batten
- f** Adapter for portrait installation

Warning! Waterproofing of the roof is heavily dependent on correct installation!
To avoid problems, we offer you practical trainings.

¹ Complies with German roofing regulations. Any installation must also be in accordance with local roofing regulations.
² The standard screws are dimensioned for roof battens 30 x 50 mm in wood classification 10. Other on request.
³ Please find the exact terms in the Mounting Systems GmbH warranty document.